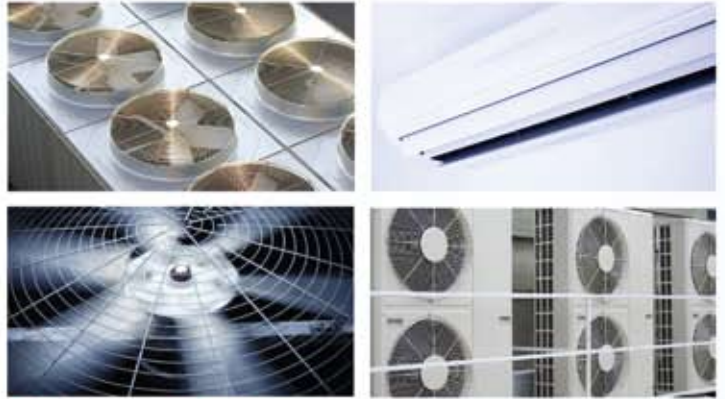


**Westair**



**Quality  
Air Conditioning  
Equipment**





# Contents

<b>Company Profile</b>	<b>4</b>
<b>Central Air Conditioning Equipment</b>	<b>5</b>
Water Cooled Screw Chillers	6
Air Cooled Screw Chillers / Heat Pump	6
Modular Air Cooled Scroll Chillers / Heat Pump	7
Central Station Air Handling Units	7
Ceiling / Floor Mounted Air Handling Units	8
Dedicated Air Handling Units	8
Chilled Water Fan Coil Units High Static Pressure Series	9
Chilled Water Fan Coil Units Low and Medium Static Series	10
Chilled Water Fan Coil Units (USA Models)	11-13
Decorative Chilled Water Fan Coil Units	14-15
<b>Unitary Products</b>	<b>16</b>
Roof Top Package Units	17
Ducted Split Units FRP Version	18
Ducted Split Units	19-20
Decorative Split Units	21
<b>Special A/C Equipment</b>	<b>22</b>
Close Control Units for Computer Rooms	23-24
Large Capacity Dx Systems	24-25
Dedicated (100% Fresh Air) Dx Systems	26
Digital Scroll VRF	27
DC Inverter	27
<b>Some of Our References</b>	<b>28-34</b>

# Company Profile

Westair Industries Incorporated is a well established American company based in Dallas, Texas.

Owing to our accumulated experience and knowledge having been in the HVAC industry since 1993, we are able today to offer one of the best and most comprehensive ranges of air conditioning equipment, satisfying the diverse needs of our international clients.

Our commitment to the quality of our equipment and services is complemented by the selection of highly qualified and equally committed engineering staff; enabling us to align ourselves with the Middle East market's demand for high standard A/C equipment and after sales service. Westair's success and determination is based on the desire to expand business through customer trust, and we always go the extra mile to meet and exceed our customers' expectations.

Westair high performance units include:

- Air Cooled & Water Cooled Chillers / Heat Pumps
- Modular & Standard AHUs and Fresh Air AHUs with different types of Heat Recovery
- 100% Fresh Air DX systems
- 2 & 4-Pipe Chilled Water Fan Coil Units
- Single & Double Skin Rooftop Package Units
- Close Control units
- VRF units
- DC Inverter Type
- Ducted Split Units with Anti-Corrosion FRP Casing
- Decorative Split Units (both Dx & Chilled Water)



Since 1993 we have been supplying Westair units to our clients with proven reliability, quality and service. Our devotion to this industry has yielded fruitful results through unique products, such as our complete fiber glass condensing unit which is specially designed for highly corrosive areas.

The Gardens project in Dubai, UAE, one of the many prestigious projects supplied with Westair units



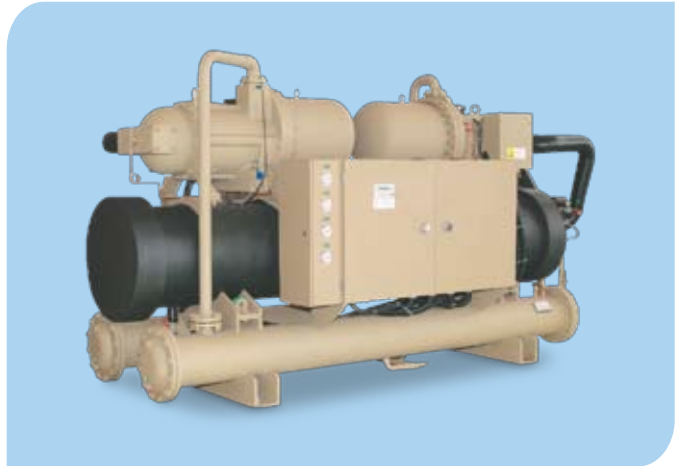
# Central AC Equipment



## Water Cooled Screw Chillers

### 47 - 650TR (50 Hz)

- Direct driven semi-hermetic industrial type screw compressors
- Independent refrigerant circuit for each compressor
- Continuous capacity modulating for each compressor
- Direct expansion shell and tube or flooded type evaporator (optional)
- Prime version available for low water temperature application down to -5°C for food and pharmaceutical industries
- Advanced microprocessor controller for full management of chiller operation and safety circuits
- Full BMS integration facility
- R22 or R134a refrigerant



Operation Range

Nominal cooling Condition	Chilled Water		Cooling Water	
	Entering Temperature (°C)	Leaving Temperature (°C)	Entering Temperature (°C)	Leaving Temperature (°C)
	-	7	30	-
Safety Operation Range	Leaving Temperature (°C)	Temperature Difference (°C)	Entering Temperature (°C)	Temperature Difference (°C)
	5 ~ 15	2.5 ~ 8	19 ~ 35	3.5 ~ 8

## Air Cooled Screw Chillers / Heat Pump

### 44 - 350\*TR (50 / 60 Hz) - \*Bigger Capacities are available

- Direct driven semi-hermetic industrial type screw compressors
- Independent refrigerant circuit for each compressor
- Continuous capacity modulating for each compressor
- Direct expansion shell and tube evaporator (flooded type optional)
- Compressor sound enclosure for each compressor (optional)
- High efficiency low noise fans
- Advanced microprocessor controller for full management of chiller operation and safety circuits
- Full BMS Integration facility
- R22 or R134a Refrigerant
- High Ambient operation up to 52°C (125°F)



## Modular Air Cooled Scroll Chillers / Heat Pump

### 15 - 240TR (50 / 60 Hz)

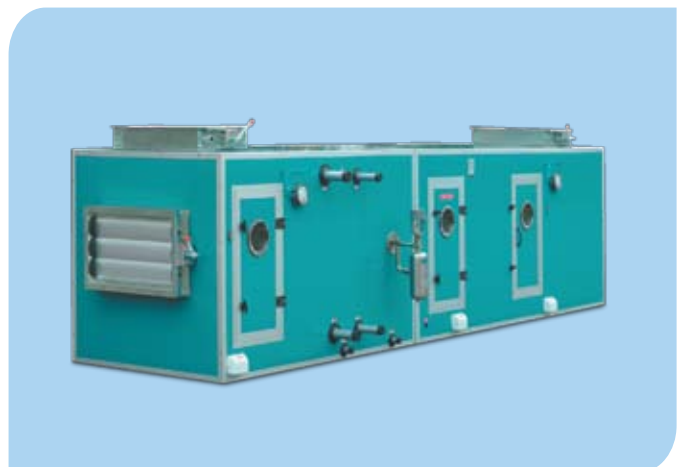
- High efficiency hermetic scroll compressor
- Multi modules can be increased or decreased according to site requirements
- Each module with 15 or 20 TR capacity
- Each module has 2 compressors
- Independent refrigerant circuit for each compressor
- Direct expansion shell and tube evaporator
- One water pipe connection for the modular set
- High efficiency low noise condenser fans
- Advanced microprocessor controller for full management of chiller operation and safety circuits
- R22 or R407c refrigerant



## Central Station Air Handling Units

### 1600 - 100,000 CFM (50 / 60 Hz)

- Low leakage rigid construction
- Double skin construction with injected polyurethane foam insulation
- Modular design to fit site space and sections requirements
- Easy site assembly for restricted areas
- Specially designed coils for low water flow and high temperature difference and for district cooling applications
- Air intake section, mixing box, prefilter and bag filter section, heating coil, cooling coil, humidifiers, fans, electric heaters, air washers, sound attenuators, economizer section, UV-C lamp and other optional sections



## Ceiling / Floor Mounted Air Handling Units

590 - 17,650 CFM (50 / 60 Hz)

- Compact design to fit different installation locations
- Low Leakage rigid construction
- Double skin construction with injected polyurethane foam insulation option
- Specially designed coils for low water flow and high temperature difference and district cooling applications
- Mixing box, pre filter and bag filter section, heating coil, cooling coil, fans, electric heaters and access options



---

## Dedicated Air Handling Units 100% Outside (Fresh) Air With Heat Recovery System

1600 - 100,000 CFM (50 / 60 Hz)

- Double deck configuration or side by side to fit in available space
- Enthalpy heat wheel, sensible heat wheel, cross flow heat exchange, heat pipes, horse shoe heat pipes, run around water coils heat recovery systems options available
- Double mixing box with economizer section options
- Low leakage rigid construction
- Double skin construction with injected polyurethane foam insulation
- Specially designed coils for low water flow and high temperature difference and for district cooling applications
- Easy site assembly for restricted areas





# Chilled Water Fan Coil Unit, High Static Series

## 200 - 2400 CFM (50 / 60 Hz)

- External static pressure up to 250 Pa
- Units are with 5 speeds motors for fine air flow adjustments at site
- Units are provided with insulated return air plenum and 1 inch aluminum washable filter
- Coils designed for low water flow and high temperature difference and district cooling applications options
- Plenum and cabinet are insulated with 10mm polyethylene foam insulation or fiber glass options
- Hot water coil for 4 pipe system option available
- Electric heater, stainless steel drain pan, coated cabinet options available



### General Specifications

Model			WICA-03P-4R					WICA-04P-4R					WICA-06P-4R				
Capacity	SPEED	RPM	950	1040	1200	1300	1380	950	1040	1200	1300	1380	970	1070	1180	1290	1370
	AIR FLOW	CFM	160	180	190	200	212	330	360	395	420	455	415	470	520	570	605
	COOLING LOAD	TMBH	5.70	6.12	6.33	6.54	6.58	12.19	12.49	12.84	13.28	13.88	14.43	15.37	16.00	16.45	16.77
Dimension	H	mm	282					282					282				
	L	mm	832					934					1035				
	D	mm	607					607					663				

Model			WICA-08P-4R					WICA-10P-4R					WICA-12P-4R				
Capacity	SPEED	RPM	970	1070	1180	1290	1370	800	950	1060	1180	1230	900	1020	1220	1340	1400
	AIR FLOW	CFM	440	510	585	650	725	705	760	820	885	930	885	955	1030	1100	1160
	COOLING LOAD	TMBH	17.71	19.56	20.29	21.02	21.61	27.06	28.10	28.11	29.18	30.23	28.56	31.19	33.06	33.63	34.13
Dimension	H	mm	282					333					381				
	L	mm	1188					1340					1238				
	D	mm	663					663					747				

Model			WICA-14P-4R					WICA-16P-4R					WICA-20P-4R					WICA-25P-4R		
Capacity	SPEED	RPM	900	1020	1220	1340	1400	900	1020	1220	1340	1400	910	980	1080	1180	1280	910	1080	1280
	AIR FLOW	CFM	990	1060	1150	1230	1290	1100	1250	1425	1620	1860	1155	1290	1425	1580	1700	1940	2165	2375
	COOLING LOAD	TMBH	35.49	36.83	38.42	39.54	40.01	42.82	45.38	48.91	51.87	54.50	55.72	60.20	62.57	64.50	65.99	59.40	64.13	70.14
Dimension	H	mm	381					423					423					525		
	L	mm	1289					1442					1594					1493		
	D	mm	747					807					807					852		

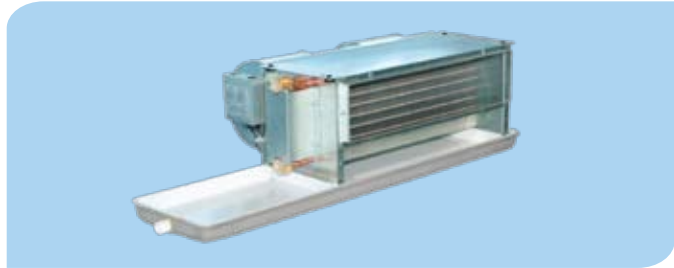
#### Notes:

1. Cooling capacity based on:  
On coil temp : 75 / 63°F DB /WB      Entering / Leaving Water Temp : 45 / 55°F
2. Air Flow Rate selected based on:  
External Static Press 0.2 Inch W.G
3. Specifications are subject to change without prior notice.

# Chilled Water Fan Coil Unit Low and Medium Static Series

200 - 2400 CFM (50 / 60 Hz)

- External static pressure up to 75 Pa
- Slim design 250mm height up to 1400 CFM
- Low noise 3 speed PSC motor with specially designed ABS blower wheel or GI wheel (optional)
- All units are provided with insulated return air plenum and washable filter
- Specially designed coils for low water flow and high temperature difference and district cooling applications
- Coils are fitted with threaded female pipe connection
- Additional hot water coil for 4 pipe system option
- Electric heater, stainless steel drain pan, coated cabinet options



## 4 Row Coil & Medium Static Series Specification (For High Water $\Delta T$ ) (50/60 Hz)

Model		WKCR -300F	WKCR -400F	WKCR -600F	WKCR -800F	WKCR -1000F	WKCR -1200F	WKCR -1400F
Air Volume m <sup>3</sup> /h	High Speed (H)	519	680	1070	1376	1450	2000	2300
	Medium Speed (M)	450	570	933	1272	1380	1815	1950
	Low Speed (L)	360	440	680	1170	1300	1680	1785

**Notes:**

1. The above parameter performance is based on 30Pa
2. Cooling capacities are based on coil air temperature 24 °C DB / 19.5 °C DB, entering / leaving water temperature 5.5 °C / 14.5 °C,  $\Delta T$  9°.
3. MPT - Male Pipe Thread, FPT - Female Pipe Thread.
4. LPM - Litre per minute, 1 LPM = 0.06 m<sup>3</sup>/hr
5. Specifications are subject to change without prior notice.

## High Air Volume (Medium Static) FCU (4 Row Coil) Specification Chart

Model		WKLR-800	WKLR-1000	WKLR-1200	WKLR-1400	WKLR-1600	WKLR-1800	WKLR-2000	WKLR-2400
Air Volume m <sup>3</sup> /h	High Speed (H)	1378	1670	1986	2567	2832	3096	3290	4121
	Medium Speed (M)	1107	1250	1511	2107	2295	2375	2649	3012
	Low Speed (L)	894	1106	1284	1807	1963	2034	2145	2299
Operation Performance (High Speed)	Total/Sensible Cooling Capacity (KW)	7.80/6.16	10.20/7.37	11.50/8.40	13.80/10.20	15.50/11.20	17.80/13.30	18.50/13.30	22.50/16.30
	Heating Capacity (KW)	13.8	16.2	18.7	23.4	26	28.5	30.5	37.5

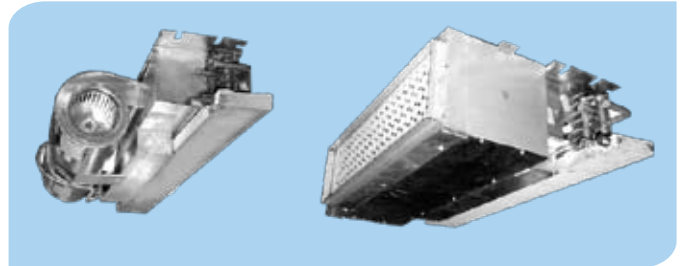
**Notes:**

1. The above parameter performance is based on 50Pa external static pressure value.
2. Cooling capacities are based on coil air temperature 27°C DB / 19.5°C WB, entering water temperature 7°C  $\Delta T$  5°C.
3. Heating capacities are based on coil air temperature 21°C DB, entering water temperature 60°C, air flow volume, water flow rate same as in the cooling mode.
4. MPT - Male Pipe Thread, FPT - Female Pipe Thread.
5. LPM - Litre per minute, 1 LPM=0.06 m<sup>3</sup>/hr.
6. Specifications are subject to change without prior notice.

## Chilled Water Fan Coil Unit

Model: HHS (300 - 1400 CFM) (50 / 60 Hz)

- External static pressure up to 75Pa
- Units are provided with 3 speed motors
- Available with 3 & 4 rows coils
- Units can be provided with or without return air plenum
- Suitable for 2 pipe system only
- Factory mounted electric heater option



Model			3HHS50	4HHS50	6HHS50	8HHS50	10HHS50	12HHS50
Capacity	Air Flow	CFM	300	400	600	800	1000	1200
	Cooling Load	T.MBH	8.40	15.50	16.00	23.90	29.20	36.00
Dimension	H	mm	311	311	311	311	311	311
	W	mm	635	1016	1016	1016	1169	1321
	D	mm	610	610	610	610	610	610

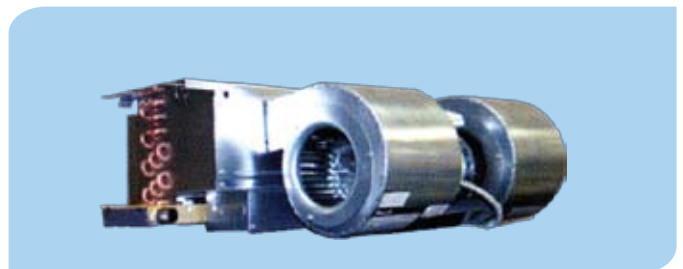
Notes:  
 Cooling capacity based on :  
 4 rows  
 On coil temp : 80 / 67 °F DB /WB  
 Entering / Leaving water temp : 45 / 55 °F  
 Air flow rate nominal

Specifications are subject to change without prior notice.

## Chilled Water Fan Coil Unit

Model: HBC (300 - 1400 CFM) (50 / 60 Hz)

- Units are provided with 3 speed motors
- Very slim design; maximum height up to 254 mm
- Available with 3 & 4 rows coils
- Units can be provided with or without return air plenum, recessed cabinet or exposed cabinet type
- Additional hot water coil for 4 pipe system option



Model			3HBC50	4HBC50	5HBC50	6HBC50	8HBC50	10HBC50	13HBC50
Capacity	Air Flow	CFM	300	400	500	600	800	1000	1200
	Cooling Load	T.MBH	7.60	10.00	11.20	14.10	16.60	19.20	27.30
Dimension	H	mm	254	254	254	254	254	254	254
	W	mm	918	1019	1019	1172	1324	1502	1578
	D	mm	578	578	578	578	578	578	578
Casing			Galvanized steel (GI)						
Cond. Drain. Connection		DIA. (in)	3/4						

Notes:  
 Cooling capacity based on :  
 4 rows  
 On coil temp : 75 / 63 °F DB /WB  
 Entering / Leaving water temp : 45 / 55 °F  
 Air flow rate nominal

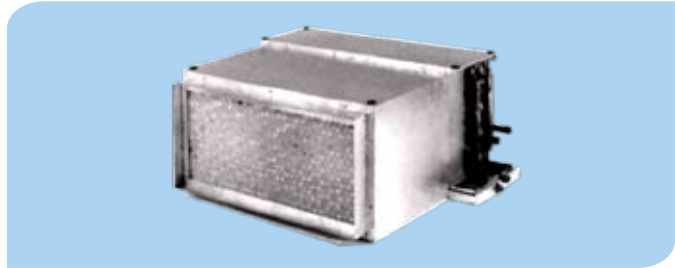
Specifications are subject to change without prior notice.

# Chilled Water Fan Coil Unit, UL Listed

## Model: HYB (500 - 2000 CFM) (50 / 60 Hz)



- External static pressure up to 150Pa
- Units are provided with 4 speed motors
- Available with 3, 4 & 6 rows coils
- Units can be provided with or without return air plenum
- Additional hot water coil for 4 pipe system option



Model			12HYB	16HYB	20HYB
Capacity	Air Flow	CFM	1200	1600	2000
	Cooling Load	T.MBH	27.60	36.06	44.16
Dimension	H	mm	419	419	419
	W	mm	902	1156	1384
	D	mm	819	819	819

Notes:  
 Cooling capacity based on :  
 4 rows  
 On coil temp : 75 / 63 °F DB /WB  
 Entering / Leaving water temp : 45 / 55 °F  
 Air flow rate nominal

Specifications are subject to change without prior notice.

# Chilled Water Fan Coil Unit (Direct Drive)

## Model: SHW-DD (800 - 2000 CFM) (50 / 60 Hz)

- External static pressure up to 150Pa
- Units are provided with 3 speed motors
- Available with 4 rows coils only
- Suitable for 2 pipe system only
- Units are with cabinet type casing coated with baked on epoxy finish



Model			24SHW4-DD		36SHW4-DD		48SHW4-DD		60SHW4-DD	
Capacity	Air Flow	CFM	975	830	1345	1200	1665	1400	2270	1980
	Cooling Load	T.MBH	17.87	15.96	24.65	22.00	33.73	31.44	41.29	37.70
Dimension	H	mm	479		479		581		581	
	W	mm	826		1067		1105		1283	
	D	mm	940		940		991		1067	

Notes:  
 Cooling capacity based on :  
 4 rows  
 On coil temp : 75 / 63 °F DB /WB  
 Entering / Leaving water temp : 45 / 55 °F  
 Air flow rate selected based on:  
 External static press 0.2 inch w.g

Specifications are subject to change without prior notice.

## Chilled Water Fan Coil Unit (Belt Drive)

Model: SHW-BD (800 - 8000 CFM) (50 / 60 Hz)

- External static pressure up to 500Pa
- All units are provided with belt driven single speed motors
- Available with 4 & 6 rows coils
- The units are with cabinet type made of heavy gauge galvanized steel
- Available in horizontal or vertical discharge type
- Additional 2 rows hot water coil can be added for pre-heat or reheat purpose



Model			24SHW	36SHW	48SHW	60SHW	90SHW	120SHW	180SHW	240SHW
Capacity	Air Flow	CFM	800	1200	1400	1800	3500	4600	6800	10000
	Cooling Load	T.MBH	15.20	23.50	30.10	35.00	80.00	107.00	151.70	212.00
Dimension	H	mm	480	480	581	581	686	813	1003	1321
	W	mm	826	1067	1105	1283	1372	1450	1677	1677
	D	mm	940	940	991	1067	1334	1334	1435	1588

Notes:

Specifications are subject to change without prior notice.

# Decorative Chilled Water Fan Coil Units

## 100 - 1600 CFM (50 / 60 Hz)

- Wall mounted, universal (floor/ceiling) cassette and free standing types with chilled water coil
- Specially designed fans for low noise applications
- Thermostat, wired and wireless remote controller options
- Condensate pump and wireless remote are standard for cassette type
- Units are provided with 3 speed motors
- Coils are designed for low water flow and high temperature difference and district cooling application options
- Additional hot water coil for 4 pipe system option for cassette and free standing units
- Factory mounted electric heater option for universal and free standing units
- Wall Mounted from 200 to 440 CFM
- Universal type from 100 to 1400 CFM
- Cassette type from 175 to 1000 CFM
- Free Standing from 200 to 1600 CFM



### Wall Mounted Units Standard Specifications

Model		WH10	WH20	WH30	
Nominal airflow	m <sup>3</sup> /min	6.9/6.0/5.6	8.6/7.7/7.0	12.5/10.5/9.5	
Nominal cooling capacity*	W	2,421	3,403	5,012	
Nominal Heating capacity**	W	4,422	6,804	8,815	
Nominal Heating capacity***	W	2,411	3,418	4,910	
Dimension	Height	mm	276	320	330
	Width	mm	870	1020	1160
	Depth	mm	225	227	255

#### Notes:

##### 1. Cooling Operation Conditions Indoor Air Inlet Temperature

- \* Normal condition : Entering air temp. 27°C DB, 19°C WB Water inlet temp. 7°C Water ΔT 5°C
- \*\* Normal condition : Entering air temp. 20°C DB Water inlet temp. 70°C Water ΔT 10°C
- \*\* Normal condition : Entering air temp. 20°C DB Water inlet temp. 50°C Water ΔT 10°C

##### 2. Design and specifications are subject to change without prior notice for product improvement.

## Universal Mounted (Floor/Ceiling) Units Standard Specifications

Model		3 Rows Coil								
		WKFR -200C	WKFR -300C	WKFR -400C	WKFR -500C	WKFR -600C	WKFR -800C	WKFR -1000C	WKFR -1200C	WKFR -1400C
Air Volume m <sup>3</sup> /h	High Speed (H)	340	520	700	850	1030	1380	1700	2040	2380
	Medium Speed (M)	255	380	510	640	765	1020	1275	1530	1785
	Low Speed (L)	170	260	340	430	510	680	850	1020	1190
Operation Performance (High Speed)	Total / Sensible Cooling Capacity (W)	1840 / 1346	2900 / 2120	4100 / 2970	4830 / 3540	5840 / 4240	7390 / 5500	9200 / 6860	11200 / 8227	13000 / 9500
	Heating Capacity (W)	3250	5020	6780	7800	9300	11900	15700	18700	21000

### Notes:

- Cooling capacities are based on coil air temperature 27°C DB / 19.5°C WB, entering water temperature 7°C, ΔT 5°C.
- Heating capacities are based on coil air temperature 21°C DB, entering water temperature 60°C, air flow volume, water flow rate same as in the cooling mode.
- MPT : Male Pipe Thread, FPT Female pipe Thread.
- LPM : Litre per minute, 1LPM = .06 m<sup>3</sup>/hr.
- Specifications are subject to change without prior notice.

## Cassette Units Standard Specifications

Specification		Model	WCC-50D	WCC-60D	WCC-80D	WCC-100D	WCC-130D	WCC-150D	WCC-170D
Rated air flow	m <sup>3</sup> /h	H	500	600	800	1000	1300	1500	1700
		M	400	500	700	900	1200	1400	1600
		L	300	400	600	800	910	1300	1500
Rated cooling capacity	kW	H	2.8	3.5	4.5	5.3	7.2	8.5	10.0
		M	2.5	3.2	4.1	5.0	6.5	7.9	9.4
		L	2.3	2.9	3.7	4.3	6.0	7.5	8.9
Rated heating capacity	kW	H	4.2	5.3	6.8	8.0	10.8	12.8	15.0
		M	3.8	4.7	6.2	7.6	9.8	11.8	14.0
		L	3.4	4.4	5.6	6.4	9.0	11.3	13.5
Dimension	Main body	W mm	580	580	580	840	840	840	840
		D mm	580	580	580	840	840	840	840
		H mm	275	275	275	230	230	285	285
	Panel	W mm	650	650	650	950	950	950	950
		D mm	650	650	650	950	950	950	950
		H mm	30	30	30	50	50	50	50

### Notes:

- Cooling capacities are based on coil air temperature 27°C DB / 19.5°C WB, entering water temperature 7°C, ΔT 5°C.
- Heating capacities are based on coil air temperature 21°C DB, entering water temperature 50°C
- Specifications are subject to change without prior notice.

## Unitary Products

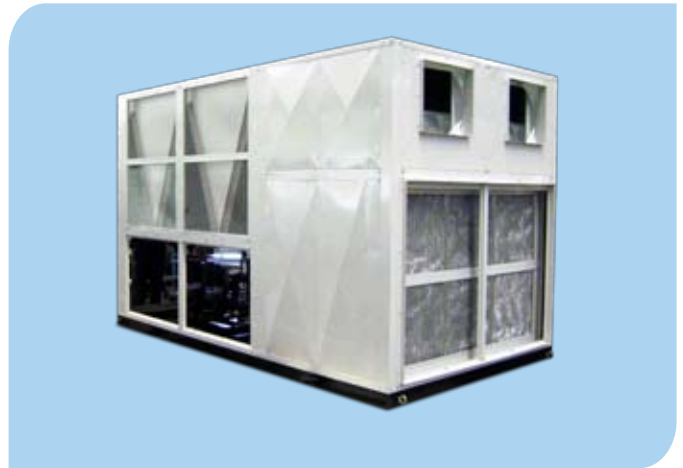




# Roof Top Package Units

3 - 40\*TR (50 / 60 Hz) - \*Bigger Capacities are available

- Specially designed for the high ambient temperature and humid market requirements
- Smooth operation at high ambient temperatures up to 52°C
- Scroll compressors for maximum efficiency and low power consumption
- One or two refrigerant circuits with 1, 2 or 4 compressors for high efficiency capacity control modulation
- High and low pressure protection is provided for each circuit
- Fully wired and assembled at the factory for minimum installation work
- Aluminum washable filter is standard for all units
- Bag Filters, Electric Heaters, Mixing Box, Return Fan, Economizer and Double Skin Evaporators options
- R22, R407c, R410a refrigerant options
- Cooling only and heat pump options



## Rooftop Package Unit Specifications (R22 / 50hz)

MODEL	PACKAGE	042	050	062	075	105	120	150	210	250	310	360	420	500	
Nominal Cooling Capacities at 35°C Outdoor temperature*	Cooling	Btu/h	43,333	53,277	62,771	79,701	113,409	122,102	169,114	224,860	256,856	317,302	381,970	439,448	501,532
		kW	12.90	15.59	18.38	23.36	33.24	35.79	49.56	65.89	75.26	93.00	111.93	125.32	146.98
		kca/h	11,089	13,407	15,801	20,086	28,579	30,771	42,616	56,653	64,718	79,965	96,245	107,762	126,386
Nominal Cooling Capacities at 46°C Outdoor temperature*	Cooling	Btu/h	39,685	49,042	57,416	72,602	104,209	111,378	154,794	205,834	232,768	284,646	347,982	401,922	454,504
		kW	11.84	14.36	16.82	21.28	30.54	32.62	45.34	60.32	68.20	83.41	101.96	113.80	133.21
		kca/h	10,181	12,349	14,466	18,296	26,260	28,049	38,987	51,865	58,644	71,724	87,676	97,858	114,541

Notes:

1. The capacities are gross capacities, which include the effect of evaporator fan motor heat  
 Evaporator Air Inlet Temperature      Condenser Air Inlet temperature  
 26.66°C DB (80°F DB)                      \*35° DB ( 95°F DB)  
 19.44°C WB (67°F WB)                      \*\*46°C DB ( 115°F DB)
2. Specification are subject to change without prior notice.

## Rooftop Package Unit Specifications (R22 / 60hz)

MODEL	PACKAGE	042	050	062	075	105	120	150	210	250	310	360	420	500	
Nominal Cooling Capacities at 35°C Outdoor temperature*	Cooling	Btu/h	42,648	50,984	65,411	75,323	114,549	126,744	158,836	227,114	266,226	321,244	397,390	412,936	514,666
		kW	12.81	15.36	19.28	22.01	33.62	37.13	46.54	66.56	78.02	94.14	111.66	117.35	150.82
		kca/h	11,013	13,206	16,583	18,926	28,906	31,930	40,020	57,233	67,087	80,948	96,018	100,907	129,688
Nominal Cooling Capacities at 46 °C Outdoor temperature*	Cooling	Btu/h	39,122	46,539	59,790	69,235	79,662	115,594	146,324	208,526	242,342	289,946	359,616	374,909	469,884
		kW	11.78	14.07	17.61	20.25	30.98	33.85	42.88	61.11	71.01	84.96	101.08	106.48	137.69
		kca/h	10,131	12,097	15,146	17,414	26,638	29,108	36,870	52,545	61,064	73,059	86,920	91,557	118,397

Notes:

1. The capacities are gross capacities, which include the effect of evaporator fan motor heat  
 Evaporator Air Inlet Temperature      Condenser Air Inlet temperature  
 26.66°C DB (80°F DB)                      \*35° DB ( 95°F DB)  
 19.44°C WB (67°F WB)                      \*\*46°C DB ( 115°F DB)
2. Specification are subject to change without prior notice.

# Ducted Split Units, FRP Version

## 1.5 - 5TR (50 / 60 Hz)

- Specially designed for high ambient temperature and humid market requirements
- Anti-corrosion FRP casing for condensing units
- Cooling only or heat pump versions
- Smooth operation at high ambient temperatures up to 52°C
- Top discharge condensing unit is standard, horizontal discharge optional
- 5 speed indoor fan motor for fine air flow adjustment
- Indoor units are suitable for External Static Pressure up to 250 Pa
- Units are supplied with aluminum washable filter
- 3 speed indoor fan motor option
- R22, R407c & R410a refrigerant options



### Condensing Unit Specifications (R22 / 50hz)

Model			WOVMB-22	WOVMB-28	WOVMB-34	WOVMB-40	WOVMB-44	WOVMB-50	WOVMB-62
Outer	Height	mm	676	778	778	828	842	842	893
Dimensions	Width	mm	610	610	610	610	762	762	762
	Depth	mm	610	610	610	610	762	762	762

### Evaporator Unit Specifications (R22 / 50hz)

Model			WICMB-07	WICMB-11	WICMB-13	WICMB-17	WICMB-19	WICMB-20	WICMB-23
Unit Combination			7 + 22	11 + 28	13 + 34	17 + 40	19 + 44	20 + 50	23 + 65
CFM @ High Speed, 50 Pascal			545	950	1150	1590	1590	1930	2150
CFM @ Med Speed, 50 Pascal			490	765	995	1345	1345	1250	1900
Nominal Rating MBH @ High Speed			19.10	26.27	33.09	38.55	43.67	49.81	61.75
Nominal Rating MBH @ Medium Speed			18.76	25.59	32.07	37.78	42.30	46.06	60.39
Actual Rating MBH @ High Speed			17.74	23.88	30.02	34.12	38.89	45.03	53.91
Actual Rating MBH @ Medium Speed			17.23	23.20	29.34	33.49	37.87	42.04	52.54
			Nominal Capacity based on 80/67° F On Coil, 95°F Ambient & 50 Pascal						
			Actual Capacity based on 80/67° F On Coil, 115°F Ambient & 50 Pascal						
Cabinet			Galvanized Steel Plate (Powder Coated paint is available)						
Outer	Height	mm	250	300	312	312	312	350	350
Dimensions	Width	mm	962	1115	1216	1318	1318	1318	1469
	Depth	mm	616	616	616	660	660	665	665

**Notes:**

1. Different Indoor/Outdoor unit combinations can be provided, consult Westair for more details.
2. Specifications are subject to change without prior notice.

## Ducted Split Units

### 0.75 - 6 TR (50 / 60 Hz)

- Slim Design with maximum height of 250mm (Indoor Units)
- Cooling and heat pump version options
- Smooth operation at high ambient temperatures up to 52°C
- Horizontal discharge condensing units as standard, Vertical discharge optional
- 3 speed indoor fan motor as standard
- Pre-arrangement for fresh air intake (optional)
- Low, medium and high static version options
- R22 standard, R407c & R410a are available as options



#### Low Static Pressure Ducted Air Conditioner Specification (50/60 Hz)

MODEL		WICD-09-L	WICD-12-L	WICD-18-L	WICD-20-L	WICD-24-L	WICD-30-L	WICD-36-L	WICD-42-L	WICD-48-L
Function		Cooling & Heating								
Power Supply		220V - 240V ~ 50Hz / PH						380V - 415V ~ 50Hz / 3PH		
Refrigerant		R 22								
Capacity*	( Btu / H )	9000 / 9500	12000 / 12800	18000 / 19300	20000 / 18600	24000 / 25600	30000 / 32000	36000 / 38000	42000 / 43000	48000 / 50000
	( w )	2640 / 2780	3520 / 2780	5272 / 5653	5860 / 5450	7030 / 7500	8800 / 9380	10550 / 11130	12300 / 12600	14000 / 14600
Indoor Unit										
Air Flow (CFM)	High	300	400	600	800	800	1000	1000	1200	1200
	Medium	250	340	520	710	710	890	890	1040	1040
	Low	200	280	460	610	610	800	800	930	930
Static Pressure	(Pa)	30	30	30	30	30	30	30	30	30
Net Dimension	(LxHxD)	866 x 255 x 520	986 x 255 x 520		1186 x 255 x 463		1486 x 255 x 520		1986 x 255 x 520	
Packing Dimension	(LxHxD)	980 x 285 x 500	10800 x 285 x 580		1280 x 285 x 550		1580 x 285 x 550		2080 x 285 x 550	
Outdoor Unit										
Net Dimension	(LxHxD)	600 x 480 x 230	780 x 590 x 255		850 x 610 x 290		830 x 720 x 310	880 x 790 x 360	830 x 1230 x 310	
Option		The specifications are basically the same when units are used with other power supplies and refrigerants, for specific data, please refer to the specs plate on the units								
Power		208 - 230V ~ 60Hz / 1Ph, 380 / 420V ~ 50hZ / 3Ph, 380 / 460 ~ 60Hz / 3Ph								
Refrigerant		R 22								

Notes:

\*Capacity Test Conditions

1. Cooling : Indoor air temperature 27°C DB / 19°C WB, Outdoor ambient temperature 35°C DB / 24°C WB

2. Heating : Indoor air temperature 20°C DB / 15°C WB, Outdoor ambient temperature 7°C DB / 6°C WB

3. Specifications are subject to change without prior notice.

## Medium Static Pressure Ducted Air Conditioner Specification (50/60 Hz)

MODEL		WICD-18-M	WICD-20-M	WICD-24-M	WICD-30-M	WICD-36-M	WICD-42-M	WICD-48-M	WICD-60-M	
Function		Cooling & Heating								
Power Supply		220V - 240V ~ 50Hz / 1ph					380V - 415V ~ 50Hz / 3ph			
Refrigerant		R 22								
Capacity*	( Btu / H )	18000 / 19300	12000 / 12800	18000 / 19300	20000 / 18600	24000 / 25600	30000 / 32000	36000 / 38000	42000 / 43000	
	( w )	5272 / 5653	3520 / 2780	5272 / 5653	5860 / 5450	7030 / 7500	8800 / 9380	10550 / 11130	12300 / 12600	
Indoor Unit										
Air flow (CFM)	High	800	400	600	800	800	1000	1000	1200	
	Medium	705	340	520	710	710	890	890	1040	
	Low	590	280	460	610	610	800	800	930	
Static Pressure	(Pa)	75	75	75	75	75	75	75	75	
Net Dimension	(LxHxD)	840 x 288 x 532			840 x 288 x 532			1530 x 288 x 531		
Packing Dimension	(LxHxD)	1045 x 300 x 630			1360 x 300 x 630			1730 x 300 x 630		

Notes:

\*Capacity Test Conditions

1. Cooling : Indoor air temperature 27°C DB / 19°C WB, Outdoor ambient temperature 35°C DB / 24°C WB
2. Heating : Indoor air temperature 20°C DB / 15°C WB, Outdoor ambient temperature 7°C DB / 6°C WB
3. Specifications are subject to change without prior notice.

## High Static Pressure Ducted Air Conditioner Specification (50/60 Hz)

MODEL		WICD-24-H	WICD-30-H	WICD-36-H	WICD-42-H	WICD-48-H	WICD-60-H	WICD-72-H	
Function		Cooling & Heating							
Power Supply		220V - 240V ~ 50Hz / 1ph				380V - 415V ~ 50Hz / 3ph			
Refrigerant		R 22							
Capacity*	( BTU / H )	24000 / 25600	30000 / 32000	36000 / 38000	42000 / 46000	48000 / 53000	60000 / 64000	72000 / 76000	
	( w )	7030 / 7499	8787 / 9373	10550 / 11130	12302 / 13474	14060 / 15524	17575 / 18746	21090 / 22261	
Indoor Unit									
Air flow (CFM)	High	1000	1000	1400	1400	1800	1800	2000	
	Medium	840	840	1210	1210	1610	1610	1610	
	Low	700	700	1030	1030	1430	1430	1430	
Static Pressure	(Pa)	150	150	150	150	150	150	150	
Net Dimension	(LxHxD)	826 x 370 x 680	826 x 370 x 680	1012 x 370 x 680	1012 x 370 x 680	1232 x 370 x 680	1232 x 370 x 680	1432 x 370 x 680	
Packing Dimension	(LxHxD)	1030 x 380 x 780	1030 x 380 x 780	1215 x 380 x 780	1215 x 380 x 780	1435 x 380 x 780	1435 x 380 x 780	1635 x 380 x 780	

Notes:

\*Capacity Test Conditions

1. Cooling : Indoor air temperature 27°C DB / 19°C WB, Outdoor ambient temperature 35°C DB / 24°C WB
2. Heating : Indoor air temperature 20°C DB / 15°C WB, Outdoor ambient temperature 7°C DB / 6°C WB
3. Specifications are subject to change without prior notice.

## Decorative DX Split Units (50 / 60 Hz)

- Cooling only or heat pump options
- Units are provided with advanced controller of multi operation modes
- Thermostat, wired and wireless remote controller options
- Condensate pump and wireless remote are standard for cassette type
- Smooth operation at high ambient temperatures up to 52°C
- Horizontal discharge condensing units as standard, Vertical discharge optional
- Indoor units are provided with 3 speed motors
- Factory mounted electric heater for universal and free standing units options
- Wall mounted from 3/4 to 3 TR
- Universal type from 1 to 5 TR
- Cassette type from 1.5 to 5 TR
- Free standing from 3 to 5 TR
- Room air conditioners (Window A/C)  
3/4- 2 1/2 TR



## Special AC Equipment



# Close Control Units for Computer Rooms and Data Centers

## 4 - 38TR (50 / 60 Hz)

- Full temperature and humidity control all year round
- Low noise and high efficiency scroll compressors
- R22, R407c, 134a and R410a refrigerant options
- Advanced microprocessor controller
- Hot gas bypass heat recovery is standard
- Top and bottom discharge options
- Full automatic operation of the unit in cooling, heating, humidifying and dehumidifying modes
- Operation smoothly up to 52°C for air cooled version
- Air cooled & water cooled condensers options
- Optional standby chilled water coil



### Air Cooled Condensation Communication Specifications

Top Return Bottom Blow  
Bottom Return Top Blow

Model			WKPCA 100A-D	WKPCA 150A-D	WKPCA 180A-D	WKPCA 240A-D	WKPCA 280A-D	WKPCA 340A-D	
Item			WKPCA 100A- U	WKPCA 150A- U	WKPCA 180A- U	WKPCA 240A- U	WKPCA 280A- U	WKPCA 340A- U	
Capacity	Total Cooling Capacity	KW	27.4	36.8	43.6	58	67.4	85.2	
	Sensible Heat Capacity	KW	25.5	34.1	40	53.9	62	76.7	
	Sensible Heat Ratio		0.93	0.93	0.92	0.93	0.92	0.9	
Compressor	Type	Fully Hermetic Scroll Compressor							
	Quantity	Unit	2	2	2	2	2	2	
Electrical Heater (3 Sections)		KW	13.5	13.5	13.5	18	18	18	
Humidifier	Type	Electrode Dry Steam Humidifier							
	Humidifying Volume	kg/h	4	8	8	13	13	13	
Outline Dimension	Width	mm	1690	1930	1930	2610	2870	3000	
	Depth	mm	770	770	770	770	770	770	
	Height	mm	1950	1950	1950	1950	1950	1950	

Front Return Top Blow

Item		Model	WKPCA 100A-F	WKPCA150A-F	WKPCA180A-F	WKPCA240A-F	WKPCA280AF
Capacity	Total Cooling Capacity	KW	27.2	37	43.6	57.8	67.2
	Sensible Heat Capacity	KW	25.3	34.6	40.5	53.7	59.1
	Sensible Heat Ratio		0.93	0.94	0.93	0.93	0.88
Compressor	Type	Fully Hermetic Scroll Compressor					
	Quantity	Unit	2	2	2	2	2
Electrical Heater (3 Sections)		KW	13.5	13.5	13.5	18	18
Humidifier	Type	Electrode Dry Steam Humidifier					
	Humidifying Volume	kg/h	4	8	8	13	13
Outline Dimension	Width	mm	1690	1930	1930	2610	2870
	Depth	mm	770	770	770	770	770
	Height	mm	1950	1950	1950	1950	1950

- Notes:
1. Indoor air return humidity: 24°C DB /17.1°C Wb (50% RH). Outdoor ambient temperature 35°C.
  2. Specifications are subject to change without prior notice.

## Water Cooled Condensation Specifications

Top Return Bottom Blow  
Bottom Return Top Blow

Item	Model	WKPCW 100A-D	WKPCW 150A-D	WKPCW 180A-D	WKPCW 240A-D	WKPCW 280A-D	WKPCW 340A-D	
		WKPCW 100A- U	WKPCW 150A- U	WKPCW 180A- U	WKPCW 240A- U	WKPCW 280A- U	WKPCW 340A- U	
Capacity	Total Cooling Capacity	KW	29.4	39.6	46.4	62.4	71.2	90.2
	Sensible Heat Capacity	KW	26.6	36.4	42.2	57.1	64.4	80.2
	Sensible Heat Ratio		0.9	0.92	0.91	0.92	0.9	0.89
Compressor	Type	Fully Hermetic Scroll Compressor						
	Quantity	Unit	2	2	2	2	2	2
Electrical Heater (3 Sections)	KW	13.5	13.5	13.5	18	18	18	
Type	Electrode Dry Steam Humidifier							
Humidifier	Humidifying Volume	kg/h	4	8	8	13	13	13
Outline Dimension	Width	mm	1690	1930	1930	2610	2870	3000
	Depth	mm	770	770	770	770	770	770
	Height	mm	1950	1950	1950	1950	1950	1950

## Front Return Top Blow

Item	Model	WKPCA100A-F	WKPCA150A-F	WKPCA180A-F	WKPCA240A-F	WKPCA280AF	
Capacity	Total Cooling Capacity	KW	29.2	39.8	47.2	63.2	72.6
	Sensible Heat Capacity	KW	26.6	36.6	42.6	57.5	62.4
	Sensible Heat Ratio		0.91	0.92	0.9	0.91	0.86
Compressor	Type	Fully Hermetic Scroll Compressor					
	Quantity	Unit	2	2	2	2	2
Electrical Heater (3 Sections)	KW	13.5	13.5	13.5	18	18	
Humidifier	Type	Electrode Dry Steam Humidifier					
	Humidifying Volume	kg/h	4	8	8	13	13
Outline Dimension	Width	mm	1690	1930	1930	2610	2870
	Depth	mm	770	770	770	770	770
	Height	mm	1950	1950	1950	1950	1950

### Notes:

- 1) Indoor air return humidity: 24°C DB /17.1°C Wb (50% RH). Condensing water temperature 35°C.
- 2) Specifications are subject to change without prior notice.

## Large Capacity Split Dx Systems 6 - 300 TR (50 / 60 Hz)

- Cooling only and heat pump versions options
- Smooth operation at high ambient temperatures up to 52°C
- Special version for low on coil temperature (down to 15°C) for libraries and other special applications
- Scroll compressors up to 50 TR
- Semi hermetic screw compressors for over 50TR
- Wide range of options for AHUs
- Advanced microprocessor control center
- Refrigerants: R22, R407c and R134a





## Specifications

Model	Indoor		WKZE 0906B-012	WKZE 0906BR-012	WKZE 0906B-014	WKZE 0906BR-014	WKZE 0908B-019	WKZE 0908BR-019		
	Outdoor	Quantity	WKS050BX	WKS050BRX	WKS060BX	WKS060BRX	WKS075BX	WKS075BRX		
			1							
Nominal Cooling Capacity		kW	12.5	12.5	14.5	14.5	19	19		
Nominal Heating Capacity		kW		13.5		16		21		
Power Supply			380V / 3PH / 50Hz							
Refrigerant			R22							
Indoor Unit	Air Volume		m <sup>3</sup> /h	2500	2500	3000	3000	4200	4200	
	Outline Dimension	Width	mm	950	950	950	950	950	950	
		Height	mm	730	730	730	730	930	930	
		Length	mm	Depends On The Module Amount Of Sections (100mm for each module)						
Outdoor Unit	Compressor Type* Quantity			Scroll *1	Scroll *1	Scroll *1	Scroll *1	Scroll *2	Scroll *2	
	Outline Dimension	Width	mm	970	970	1010	1010	1403	1403	
		Depth	mm	440	440	420	420	821	821	
		Height	mm	955	955	1230	1230	985	985	
	Piping Diameter	Liquid Line	mm(in)	9.53 (3/8)	9.52 (3/8)	9.52 (3/8)	9.52 (3/8)	2* 12.7 (1/2)	2* 12.7 (1/2)	
Gas Line		mm(in)	19.05 (3/4)	19.05 (3/4)	19.05 (3/4)	19.05 (3/4)	2* 19.05 (3/4)	2* 19.05 (3/4)		

Model	Indoor		WKZE 1307B-026	WKZE 1307BR-026	WKZE 1408B-030	WKZE 1408BR-030	WKZE 1409B-037	WKZE 1409BR-037		
	Outdoor	Quantity	WKS100BX	WKS100BRX	WKS125BX	WKS125BRX	WKS150CX	WKS150CRX		
			1							
Nominal Cooling Capacity		kW	26.5	26.5	30	30	36.8	36.8		
Nominal Heating Capacity		kW		28		34		41		
Power Supply			380V / 3PH / 50Hz							
Refrigerant			R22							
Indoor Unit	Air Volume		m <sup>3</sup> /h	5000	5000	6500	6500	7500	7500	
	Outline Dimension	Width	mm	1450	1450	1450	1450	1450	1450	
		Height	mm	830	830	930	930	1030	1030	
		Length	mm	Depends On The Module Amount Of Sections (100mm for each module)						
Outdoor Unit	Compressor Type* Quantity			Scroll *2	Scroll *2	Scroll *2	Scroll *2	Scroll *3	Scroll *3	
	Outline Dimension	Width	mm	1403	1403	1558	1558	1150	1150	
		Depth	mm	821	821	882	882	1143	1143	
		Height	mm	985	985	1190	1190	1260	1260	

Model	Indoor		WKZE 1610B-050	WKZE 161BR-050	WKZE 1810B-062	WKZE 1810BR-062	WKZE 2011B-076	WKZE 2011BR-076		
	Outdoor	Quantity	WKS200BX	WKS200BRX	WKS250BX	WKS250BRX	WKS150CX	WKS150CRX		
			1							
Nominal Cooling Capacity		kW	50	50	62	62	76	76		
Nominal Heating Capacity		kW		56		64		82		
Power Supply			380V / 3PH / 50Hz							
Refrigerant			R22							
Indoor Unit	Air Volume		m <sup>3</sup> /h	10000	10000	12000	12000	15000	15000	
	Outline Dimension	Width	mm	1650	1650	1850	1850	1950	1950	
		Height	mm	1130	1130	1130	1130	1230	1230	
		Length	mm	Depends On The Module Amount Of Sections (100mm for each module)						
Outdoor Unit	Compressor Type* Quantity			Scroll *2	Scroll *2	Scroll *2	Scroll *2	Scroll *3	Scroll *3	
	Outline Dimension	Width	mm	1808	1808	1808	1808	1150	1150	
		Depth	mm	1090	1090	1090	1090	1143	1143	
		Height	mm	1210	1210	1210	1210	1260	1260	

- Notes:
- All above cooling capacity based on indoor temperature DB 27°C / WB19°C, and ambient temperature DB35°C.
  - Heating capacity based on on coil temperature DB20°C, and ambient temperature 7°C/6°C
  - Indoor unit's fan and motor's heat not considered in above cooling capacity, ESP will be customized.
  - Specifications are subject to change without prior notice.

## Dedicated (100% Fresh Air) Dx Systems

2,000 to 40,000 CFM (50 / 60 Hz)

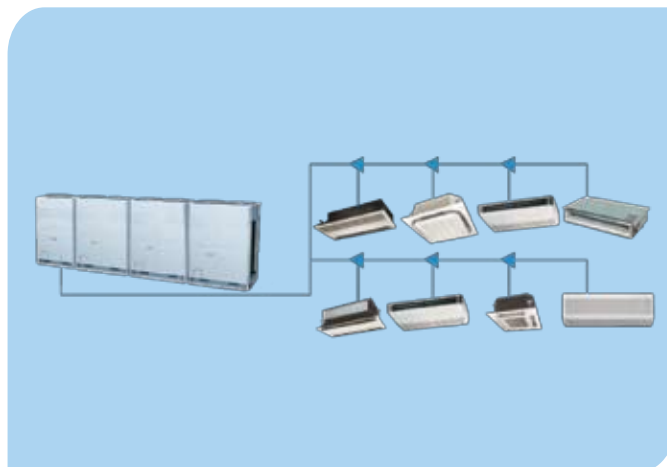
- Package type up to 6000 CFM and Split system up to 40000 CFM fresh air
- Specially and precisely designed for high on coil temperatures and humid applications
- Full climate control for temperature and humidity all year round
- Double deck air handling units with different types of heat recovery options
- Each unit has at least two specially designed refrigerant circuits to handle high temperature difference
- Hot gas bypass as standard for efficient capacity modulating
- Smooth operation at high ambient temperature up to 52°C
- Wide range of options for AHUs including bag filters, humidifiers, electric heaters and others
- Advanced microprocessor control center
- Special version available for clean room applications
- R22, R407c and R134a refrigerant options



## Digital Scroll VRF

0.5 - 28 TR (50 / 60 Hz)

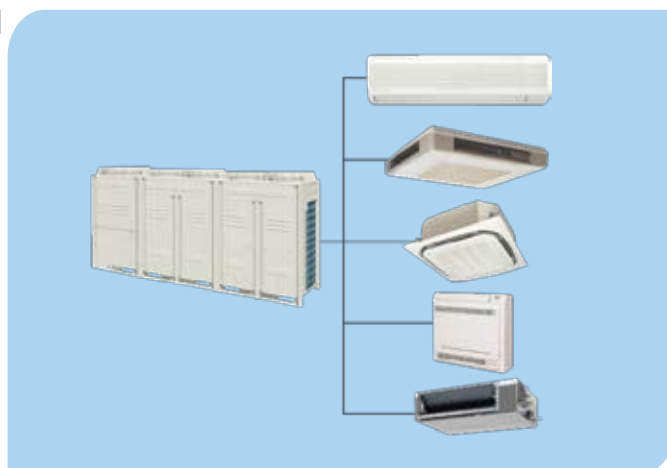
- Operation principle : Digital Scroll Compressor
- Wide capacity range with continuous modulation
- Simplified Electronic Architecture with low Electromagnetic Interference
- Long piping length
- Remote Addressing
- R410A refrigerant
- Advanced technology for oil control
- High efficiency Heat Exchanger
- Simplified Mechanical Architecture
- Compact design for easy transportation and installation
- Different Indoor units including Wall Mounted, Floor Standing, & Ceiling mounted Cassette (One-way, Two-way, and Four-way)
- Centralized control able to control upto 64 indoor units, with the connection length able to reach upto 1,200m
- Full BMS integration facility



## DC Inverter (Systems & Individuals)

7 - 51 TR (50 / 60 Hz)

- Principle of Operation : High efficiency full DC inverter compressor
- Wide operation range
- DC fan motor
- High Efficiency units
- Flexibility in design for big sized buildings
- Enhanced comfort
- Long Pipe Length
- Easy installation and service
- Indoor and Outdoor centralized controllers
- Full BMS integration facility
- Individual inverter split units





## Some of our References >

Jumeirah Islands one of the many prestigious projects supplied with Westair units



## Some of our References



**Project name:** Jebel Ali Airport City  
**Project type:** International Airport  
**Equipment:** 239 Ducted split Units, 184 Decorative Split Units  
**Location:** Jebel Ali - Dubai, U.A.E.  
**Year supplied:** 2008  
**Client:** Government of Dubai, Dept. of Civil Aviation  
**Consultant:** Dar al Handasah  
**MEP Contractors:** 1)Convergent Value Engg.  
 2)Alko Air Conditioning and Mechanical Works  
 3)Site Technollogy LTD.



**Project Name:** Four Seasons Hotel  
**Project Type:** Luxurious administration floors & private rooms & suites  
**Equipment:** 180 Chilled water Fan Coil Units  
**Location:** Cairo, Egypt  
**Year Supplied:** 2007 -2008  
**Consultant:** Mechanical Electrical Design  
**Main Contractors:** Square  
**MEP Contractors:** Mechano



**Project Name:** Al Yaqoub Tower (Big Ben Tower)  
**Project Type:** Residential Tower  
**Equipment:** 687 Chilled Water Fan Coil Units and 10 Fresh AHUs  
**Location:** Dubai, U.A.E.  
**Year Supplied:** 2008  
**Client:** Al Yaqoub Group  
**Project Management:** Edara  
**Consultant:** Adnan Saffarini  
**Main Contractors:** Arabian Construction Company  
**MEP Contractors:** Alko Air Conditioning and Mechanical Works



**Project Name:** Al Hilla Burn Hospital  
**Project Type:** Hospital that specializes in treatment of patients with burn injuries  
**Equipment:** 18 Packaged Units  
**Location:** Al Hilla, Iraq  
**Year Supplied:** 2009  
**Client:** Babylon Health Directorate  
**Project Manager:** Eng. Hussain Al Bakry  
**Consultant:** SCITAC CO.  
**Main Contractors:** SCITAC CO.  
**MEP Contractors:** SCITAC CO.



**Project Name:** Jumeirah Islands  
**Project Type:** 750 luxury villas  
**Equipment:** 6,300 Chilled Water FCUs, plus 736 Fresh Air C/W FCUs  
**Location:** Dubai, UAE  
**Year Supplied:** 2005  
**Client:** Nakheel  
**Project Management:** Turner  
**Consultant:** Diar Consultant  
**Main Contractors:** 1) Larsen & Toubro 2) Ali Moosa & Sons Contracting  
 3) Sembcorp Engineers & Constructors  
 4) Obaidulla Contracting  
**MEP Contractors:** 1) Alko Air-Conditioning & Mechanical Works  
 2) Eagle Electro-Mechanical



**Project Name:** City Center Alexandria  
**Project Type:** Shopping Center & Hypermarket  
**Equipment:** 315 Chilled Water FCUs  
**Location:** Alexandria, Egypt  
**Year Supplied:** 2008 / 2009  
**Client:** Majid Al Futtaim Group  
**Project Management:** Hill  
**Consultant:** Mechanical Electrical Design  
**Main Contractors:** SIAC  
**MEP Contractors:** Delta



**Project Name:** Courtyard Marriott  
**Project Type:** Hotel  
**Equipment:** 274 Chilled Water Fan Coil Units  
**Location:** Green Community, Dubai, U.A.E.  
**Year Supplied:** 2005  
**Client:** J. W. Marriott Hotels / Properties Investement  
**Project Management:** Edara  
**Consultant:** Diwan  
**Main Contractors:** Saleh Constructions  
**MEP Contractors:** Thermo



**Project Name:** Nile City  
**Project Type:** 2 commercial towers (34 floors each) & Fairmont Hotel (750 luxury rooms & suites)  
**Equipment:** 2,500 Chilled Water FCU (concealed & Decorative), plus small A.H.Us  
**Location:** Cairo, Egypt  
**Year Supplied:** 2002 - 2008  
**Client:** Nile City Investements  
**Project Management:** Nile City Investements  
**Consultant:** Dr. Shaker Consultant Group  
**Main Contractors:** Orascom  
**MEP Contractors:** JV Besix Orascom



Project Name: Faramandey IT Data Center  
 Project Type: Telecommunications IT Data Center  
 Equipment: 12 Close Control Air Conditioning units  
 Location: Sulaymaniyah, Iraq  
 Year Supplied: 2011  
 Client: Asiaceil Communications  
 Project Management: Asiaceil Communications  
 AC Contractor: Saif Middle East (L.L.C.)



Project Name: National Nile Cruise  
 Project Type: Floating Hotel (Nile Cruise),  
 200 Luxurious rooms & Suites  
 Equipment: 220 Chilled Water Fan Coil Units  
 Location: Cairo, Egypt  
 Year Supplied: 2004  
 Client: National Nile Paradise Cruise  
 Consultant: Mechanical Electrical Design  
 Main Contractors: Arab Contractors  
 MEP Contractors: Hammada Work Shop



Project name: Union Properties Tower  
 Project type: 55 stories residential tower  
 Equipment: 950 Low Noise Chilled Water FCUs  
 Location: Dubai, U.A.E.  
 Year supplied: 2002  
 Client: Union Properties  
 Project Management: Edara  
 Consultant: Khatib & Alami  
 Main Contractor: Union Properties  
 MEP Contractor: Thermo Electric



Project Name: Borg Al Arab International Airport  
 Project Type: International Airport  
 Equipment: 300 Chilled Water Fan Coil Units (Concealed & Decorative)  
 Location: Borg Alarab - Alexandria, Egypt  
 Year Supplied: 2008  
 Client: Egyptian Airports Company  
 Project Management: Dar Al Handasa  
 consultant: ECG  
 Main Contractors: Orascom  
 MEP Contractors: Uni-Tech





**Project Name:** Holiday Inn Hotel at City Stars  
**Project Type:** 5 Star Hotel  
**Equipment:** 77 Chilled Water Fan Coil Units  
**Location:** Cairo, Egypt  
**Year Supplied:** 2005  
**Client:** Golden Pyramids Plaza  
**Project Management:** Cassia  
**Consultant:** Dr. Shaker Consultant Group  
**Main Contractors:** JV CCC - Orascom  
**MEP Contractors:** Enco



**Project Name:** Discovery Gardens  
**Project Type:** 30 Residential Bldngs  
**Equipment:** 4,524 Chilled Water Fan Coil Units and 55 Chilled Water FAHUs  
**Location:** Dubai, U.A.E.  
**Year Supplied:** 2006  
**Client:** Nakheel  
**Project Management:** Turner  
**Consultant:** Engineering Consultant Group  
**Main Contractors:** Al -Huda Contracting Company  
**MEP Contractors:** Alko Air Conditioning and Mechanical Works



**Project Name:** Sonesta Hotel  
**Project Type:** 5 Star Hotel  
**Equipment:** 215 Chilled Water Fan Coil Units  
**Location:** Cairo, Egypt  
**Year Supplied:** 2008  
**Client:** Mr. Mounier Ghabour  
**Consultant:** Mechanical Electrical Design  
**Main Contractors:** Sodico  
**MEP Contractors:** New Techno Team



**Project Name:** University of Dohuk  
**Project Type:** University  
**Equipment:** 65 Chilled Water Fan Coil Units  
**Location:** Dohuk, Northern Iraq  
**Year Supplied:** 2007  
**Client:** University of Dohuk  
**Consultant:** Eng. Ghanim Abu Baker Derbez  
**Main Contractors:** 4 Brothers Co.  
**MEP Contractors:** 4 Brothers Co.



Project Name: Al Mamoon Exchange and Telecommunications Center  
Project Type: Communications Center  
Equipment: 3 Air Cooled Water Screw Chillers, 11 AHUs, 1 Full fresh air AHU, & 126 FCUs  
Location: Baghdad, Iraq  
Year Supplied: 2010  
Client: Iraqi Ministry of Communications  
Consultant: National Engineering Bureau  
Main Contractors: Alfa Consult  
Sub Contractors: Kufan Group



Project Name: Royal Oceanic  
Project Type: 34 floor residential tower  
Equipment: 7 fresh air Air Handling Units  
Location: Dubai Marina, Dubai, U.A.E.  
Year Supplied: 2008  
Client: Star Group Global  
Consultant: Khatib & Alami  
Main Contractors: Al Sahel  
MEP Contractors: Al - Ittihad Electro Co. (L.L.C.)



Project Name: Damas Gold Factory  
Project Type: Industrial  
Equipment: 52 Chilled Water FCU's and 154 Ducted & Decorative Splits  
Location: Dubai, U.A.E.  
Year Supplied: 2005  
Client: Damas  
Consultant: Adnan Saffarini  
Main Contractors: Al Rashad Contracting Co.  
MEP Contractors: Alpha Noor Electromechanical Works



Project Name: The Gardens  
Project Type: 129 Buildings (3,800 Central A/C Apartments)  
Equipment: 7,900 Chilled water FCUs; supplied complete with Apartments controls and Building District Cooling Control Systems  
Location: Dubai, UAE  
Year Supplied: 2002  
Client: Nakheel  
Consultant: Khatib & Alami  
Main Contractors: 1)Obaidallah 2)FNC 3)Al-Sahel 4)Saleh Construction  
MEP Contractors: 1)Bin Lahej 2)Layan 3)Alko Air Conditioning and Mechanical Works



**Westair**  
Industries, Inc.

U.S.A.

Dallas, Texas TX 75374-0183  
P.O. Box 740183  
Phone: +214-361-2164 Fax: +214 361-2165  
E-mail: [info@westairind.com](mailto:info@westairind.com)

U.A.E.

Dubai  
P.O. Box 12954  
Phone: +971-4 267 0909 Fax: +971-4 267 5747  
E-mail: [info@westairind.com](mailto:info@westairind.com)

[www.westairind.com](http://www.westairind.com)

All models, sizes, dimensions, and specifications are subject to change without prior notice.

CATALOG # WESGEN002